

# VILLA CORTILE



**Starting From 4,800 SF | 3 Bedrooms / 3.2 Baths | 4-Car Garage**

The Villa Cortile presents a unique fusion of Old World French design with influences from Palm Beach's manor homes. This is a very spacious, open plan, which was masterfully designed to eliminate wasted corridor space – each room is an extension of another.

An impressive two-story fireplace anchors the great room with its soaring vaulted ceiling and three sets of French doors, flooding the room with natural light. The circular dining room leads to a marvelous kitchen area that showcases a prep kitchen, dining area and family room with dramatic beams. The owner's suite includes a sitting room, two-way fireplace and expansive walk-in closet. An artistic staircase leads to the loft with two bedroom suites. Located off the back stairs an additional loft apartment features a kitchen, bedroom, studio fireplace and walk-in closet.

**MOCERI®**

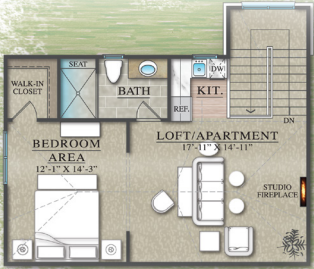
Moceri.com



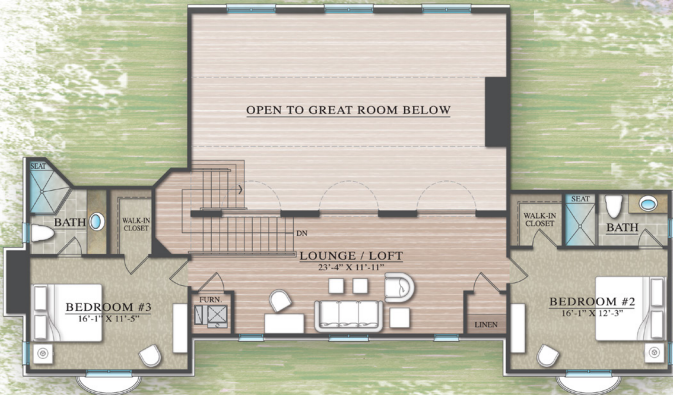
# VILLA CORTILE

Starting From 4,800 SF | 3 Bedrooms / 3.2 Baths | 4-Car Garage

## LOFT APARTMENT



## FIRST LEVEL



## SECOND LEVEL

**MOCERI**

Moceri.com

*Dominick Tringali*  
ARCHITECTURAL COLLECTION

\*Shown with optional features. We reserve the right to modify features, price, specifications, and/or change or discontinue floor plans without notice or obligation. Photos represent similar plan and finishes. Floor plan dimensions are approximate. All information provided herein is subject to change at developer's sole discretion. © 2021 Moceri. All Rights Reserved. 060321

